

25th Anniversary Review

We are pleased to report the 25th anniversary of the founding of Richard Griffiths Architects in April 1993. This review celebrates our major projects from each quinquennium. We should like to take the opportunity to thank all friends of the practice for their support and encouragement.



Toynbee Hall

The restoration of Toynbee Hall nears completion, a homage to the Arts and Crafts and the Aesthetic Movement. It will provide space for conferences, offices and live-in accommodation.

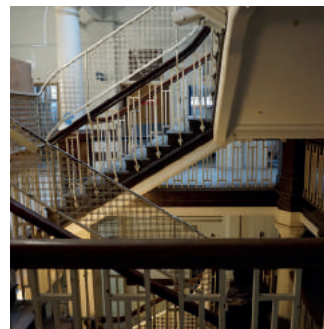


St Alfege, Greenwich

The HLF have announced a stage 2 grant for Hawksmoor's great church, allowing greater access and enjoyment for the public to church and crypt. A new steel and timber ramp will lead to the south portico.

London Dock

The first phase of the conversion of the 1805 Pennington Street warehouse with its 1000 foot long vaulted undercroft is taking shape, and will provide dramatic architects' offices.

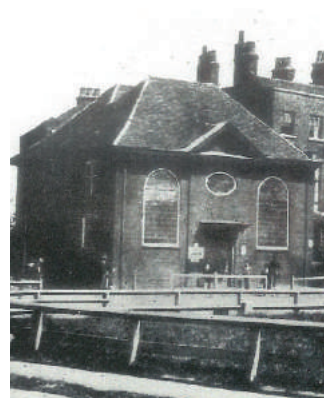


Tower Hamlets Civic Centre

Richard Griffiths is acting as heritage consultant for the conversion of the former Royal London Hospital. The original Georgian rear alteration will be repaired and revealed in a new atrium.

Ragged School Museum

Our conversion of the 1870's warehouse, the largest Ragged School in London, will provide more space for the museum, education, start-up offices, gallery space and a canalside café/ bar.



Newington Green Unitarian Meeting House

This remarkable building, dating from 1708, is to be restored and opened up to the public with the support of the HLF. It will allow multiple uses of the meeting house, and a range of meeting rooms for the use of the community.

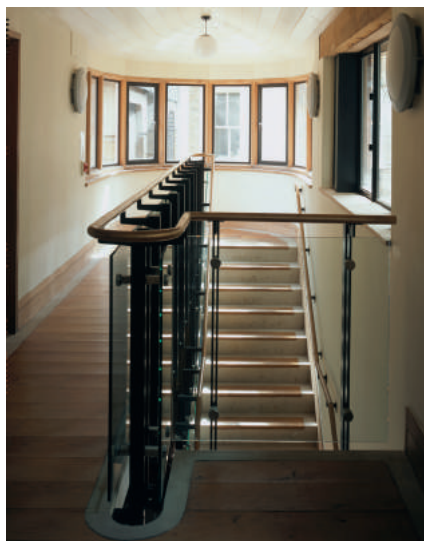
1993-1998

Southwark Cathedral

Richard Griffiths was Cathedral Architect from 1997 to 2012, overseeing a major programme of repairs and upgrading to the Cathedral. The Millennium Project, opened by Nelson Mandela in 2001, involved the cleaning and floodlighting of the external fabric of the Cathedral, the relandscaping of the churchyard, and the design of new buildings around a new courtyard giving visitors access to the Cathedral from the Thames Path. The buildings contain a refectory, shop, education centre and a range of meeting and function rooms that provide a vital source of income to support the mission and fabric of the Cathedral.

Awards

RIBA National Award 2002
Civic Trust Commendation 2002
Landscape Institute Award 2002



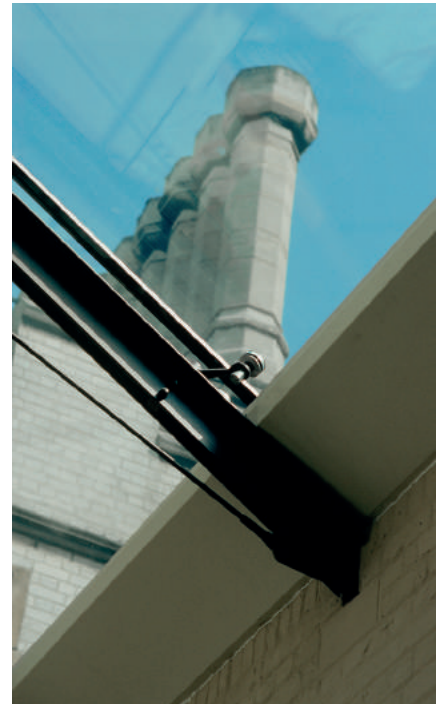
1998-2008

Lambeth Palace

To celebrate the Millennium and to open the Palace to visitors, the Archbishop of Canterbury and the Church Commissioners embarked on an ambitious project to conserve and remodel an area at the heart of the Palace that gives access to the wonderful 13th century crypt chapel. Some 20th century buildings were removed to create a new courtyard, with a glazed roof, a stone floor and a stone seat around the perimeter to avoid the need to underpin the walls. A platform lift gives access to ground, first and courtyard levels, whence a further, barely visible, scissor lift gives access to the crypt. The contemporary bronze-finished steel, glass and timber bridge and balustrades make an effective contrast with the heavy historic masonry walls, which were conserved and limewashed to bring out their rich texture.

Awards

RFAC Building of the Year Shortlist 2001
Civic Trust Awards Commendation 2002



2003-2008

Kenilworth Castle Tudor Garden

RGA carried out for English Heritage a fascinating project to restore the Tudor garden where Lord Leicester entertained Queen Elizabeth for 19 days in 1575. A letter written at the time describes a garden laid out in quarters around a marble fountain, on axis with a two storey aviary, overlooked from a terrace in front of the keep, with classical arbours at each end. The structures have been designed authentically with green oak frames, as advised by a panel of experts, using evidence from archeological investigations, as well as from pattern books, prints, and construction techniques of the period. The practice also converted Lord Leicester's Tudor Stables to house an exhibition and café, and designed a new ticket building and shop, a contemporary green oak-framed building following the tradition of timber framed outbuildings that would have been characteristic of the site in medieval times.

Awards

Warwick District Council Design

Award 2006

Civic Trust Awards Special Mention
2007

The Wood Awards Highly
Commended 2006



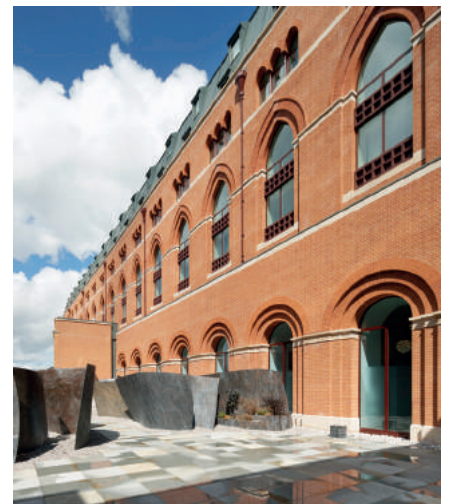
2008-2013

St Pancras Hotel

Sir George Gilbert Scott's Grand Midland Hotel, one of the most famous buildings of the 19th century. Opened in 1873, closed in 1933, and defeated all attempts at conversion for new uses – until the arrival of Eurostar once more made hotel use possible. RGA were appointed as joint architects with RHWL to return the building to use as an international Grand Hotel, with a new wing of 190 hotel bedrooms on Midland Road, and residential apartments on the upper floors. RGA designed the major public areas of the hotel – including the main concourse, the lift lobby – and the new wing, in a simplified version of Scott's Gothic that masks a heroic engineering structure spanning the 30m loading bay of the railway. The residential entrance reuses the original hotel entrance, and much of Scott's architecture in the flanking platform level rooms has been rediscovered and restored to its original decorative grandeur.

Awards

RIBA National Award 2012
RIBA London Best Building in a Historic Context 2012



2013-2018

St Albans Abbey

Alban, a Roman centurian, became England's first martyr in AD 250. The Abbey founded on the site of his martyrdom became one of the most important in the country. The present building dates from 1077, with major additions from later centuries. Richard Griffiths was appointed Cathedral Architect in 2000 and has guided all the works to the Abbey over a 17 year period. He was responsible for repairs to the 13th century timber vaults to the presbytery, the preservation of the medieval wall paintings to the nave and south ambulatory, and the conservation and repair of medieval stonework to the west porches and to the east end. He also designed the reordering of the nave sanctuary, the provision of full access inside and around the Abbey, alterations and relighting of the choir, the rehang of the bells, the relandscaping of the south churchyard, and major commissions for new stained glass windows and sculpture.

Awards

RIBA National Award 2017
RIBA East Award 2017
RIBA East Conservation Award 2017
RIBA East Project Architect of the Year Award 2017

