

Design review



Bedales School

Restoration of an Arts and Crafts masterpiece

Lupton Hall, Ernest Gimson's wonderful Arts and Crafts school hall at Bedales, has been restored as a venue for music and talks. The removal of the former stage proscenium has revealed the Hall in all its splendour, with its massive green oak cruck framed roof and benches. In order to allow the raked stage to be used as an orchestral platform, the whole stage floor has been made level by cutting out brickwork and dropping the back of the stage, in one piece, so that the wide oak boards remain undisturbed. We are now planning the refurbishment of the former Art and Design buildings as teaching rooms, studies for students, and a common room/ bar for the sixth form.



Drift Barn

Conversion of rustic shed to holiday barn

Drift Barn has been designed as a new, highly insulated, timber frame barn dropped inside the shell of the former timber shed in the AONB overlooking the Blyth Estuary in Suffolk. The sliding glazed doors line up with the doors to the shed, which now act as shutters. The Corten corrugated roof matches the colour of the former rusty corrugated iron roof that preceded it. The interior of the barn is a rich material palette of clay plaster, walnut joinery and slate tiling, and the inside of the timber boarding is visible through the glazed doors.

Photo: RNC/Rufus Owen



Toynbee Hall

HLF-funded project to give Toynbee Hall a sustainable future takes shape on site

The new slate roof to Toynbee Hall, with its three historic gables is complete, and the zinc roof to the new building with five new gables is nearing completion. The exceptional complication of the roof forms is belied by the generous new corridor that runs behind the rear elevation and binds new and old together.



London Docks

Sublime beauty of the 1805 vaults revealed

The project to convert the 1000 feet long Pennington Street Warehouse of 1805 has begun, and the undulating top of the brick vaults that run the length of the lower floor stand revealed, together with the remarkable stone columns shaped to receive them. The 4 foot thick walls and massive vaults were designed to hold barrels of imported wine and spirits; a testament to the enduring quality of Victorian engineering.



Knightsbridge

Demolition now complete

The whole of the building behind the 1905 façade by Alban Caroe has now been demolished, and the façade stands free against the sky. The rebuilding behind the façade, and below the roof in facsimile, will start shortly to provide shops, offices and residential apartments.

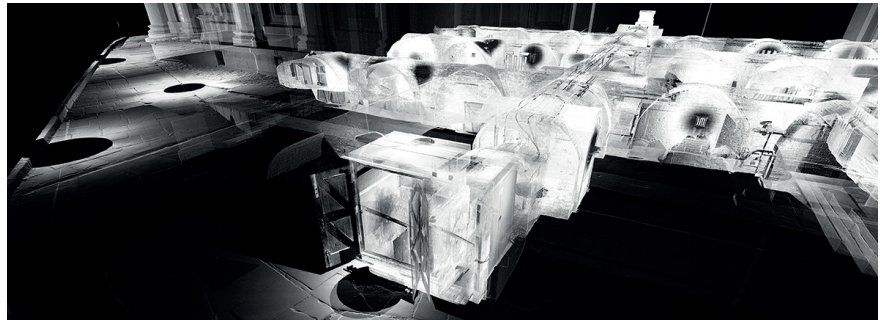
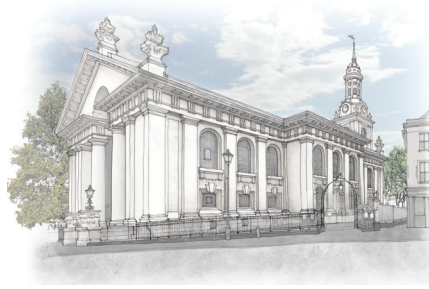


St Alfege, Greenwich

Exciting discovery of a Hawksmoor drawing

During his research for a Conservation Management Plan for the church, Richard Hill discovered a previously unknown Hawksmoor drawing for the north elevation, pricked through in order to transfer the plan. The drawing bears witness to the Roman grandeur of the church, and to Hawksmoor's genius. A second stage HLF application has now been submitted, including access to the fine crypt and the provision of a curving external ramp giving equal access to the north door.

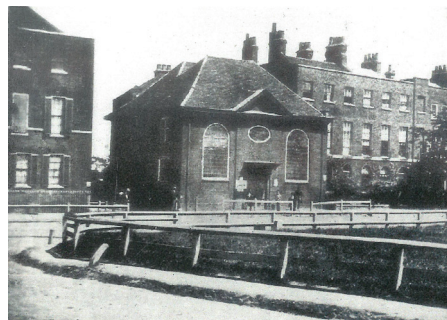
3D Scan: Simon Withers



Newington Green Unitarian Chapel

Historic Chapel receives HLF stage 1 funding

The oldest non-conformist chapel in London of 1708 lies hidden behind a Victorian re-fronting. It has a unique importance in the history of non-conformism, associated with Richard Price, Joseph Priestley and Mary Wollstonecraft. The HLF project will provide equal access, an improved space for meetings and events, and new facilities to give the Chapel a sustainable future at the heart of the local community.



Ragged School Museum

Museum set fair for a sustainable future

The museum is unique in telling the story about the poorest children in east London, and the Victorian school lessons exert an irresistible fascination for today's school children. The adjacent warehouse is to be converted into further premises for the museum, including a canalside café/ bar, start-up offices and a multi-use space on the top floor open to the roof, enjoying a wonderful quality of light, and suitable for exhibitions, functions and events.



Tower Hamlets Civic Centre

A bright future for the former Royal London Hospital

Now that the hospital has moved to new buildings to the south, the listed Georgian hospital of the 1750's is vacant, and is to be converted into the Civic Centre for Tower Hamlets, an ideal use for the site. We are heritage consultants for the project, and have discovered that the rear elevation of the Georgian hospital survives remarkably intact. It will be revealed in a new atrium between the old and new buildings.



Willesden Cemetery

Conservation and development for London's foremost Jewish cemetery

The Willesden Jewish Cemetery is to be opened to welcome the general public to understand the heritage of the cemetery, newly listed, and of the notable people buried there, including Meyer Rothschild, Mark Gertler and Rosalind Franklin. The red brick lodge will provide welcome to visitors, and new planting will enhance the setting of the buildings and monuments..



RIBA Awards

We were delighted that our work at St Albans Abbey over 17 years, having won three regional RIBA awards, went on to win one of only 59 National RIBA Awards. It is gratifying that the work of conservation and alteration, carried out as a series of small projects each year, has been recognised by the RIBA as a single cumulative project worthy of national recognition. With the South Region RIBA Award at Brighton College, this has been a year to celebrate.

