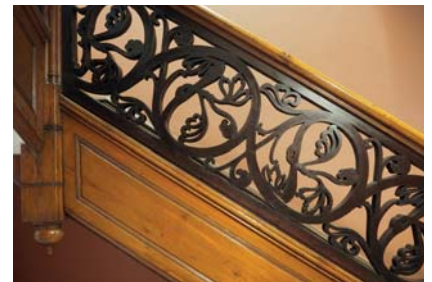
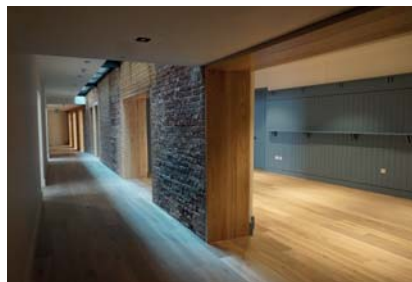
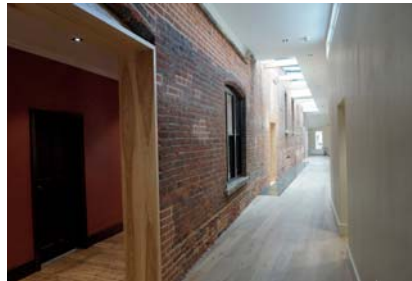


Design review

Toynbee Hall

Toynbee Hall reopens after major repairs, alterations and extensions

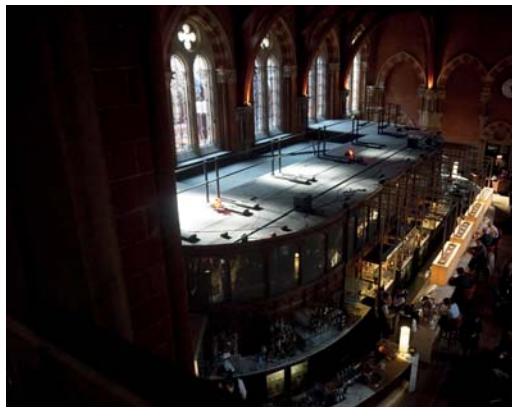
We have completed the major HLF-funded regeneration project for Toynbee Hall. The listed building off Commercial Street has been the centre from which its work of education and welfare for disadvantaged people in East London has been carried out since its foundation in the 1880's. The two public halls are reached from a new main entrance, visible from Commercial Street, via a new corridor that runs the full length of the original rear elevation. The original brickwork has been exposed to view, including the scars of time, and acts as a means of orientation for visitors. A new building to the rear has five narrow gables, placed in alliteration to the two wide and one narrow gable of the original building.



St Pancras Hotel

New mezzanine bar in the St Pancras Hotel Booking Office

We have obtained consent for the creation of new mezzanine bar above the linenfold panelled Booking Office at the St Pancras Hotel. A generous spiral stair leads to the mezzanine bar which overlooks the Booking Office below, with new bar fittings and furniture.



London Dock

Completion of the first cut-through

Six years in the planning, the first Area (of five) at the Pennington Street Warehouse has just been completed. It was designed by Daniel Alexander in 1805, 1000 feet long, with brick groin-vaulted cellars the whole length. We have cut through the vaults to give light and access to lettable units at cellar and upper ground floor levels, linked by steel and glass stairs, lifts and balustrades. We have aimed to reflect Daniel Alexander's tough brick warehouse aesthetic in our own new detailing and materials.



St Albans Abbey

Hertfordshire Design Award for St Albans Abbey

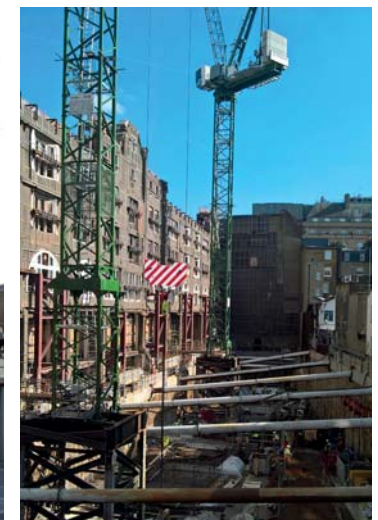
Following the RIBA Award in 2017, our 18-year project at St Albans Abbey has now been awarded the Special Conservation Award in the Hertfordshire Design Awards. The work that we carried out included conservation of the medieval stonework of the cloister remains, Lady Chapel and the West porches. The award also recognises the vital part that the Abbey plays in civic events, degree ceremonies and community events as the cathedral church of Hertfordshire.



Knightsbridge

Excavation begins behind the retained facades

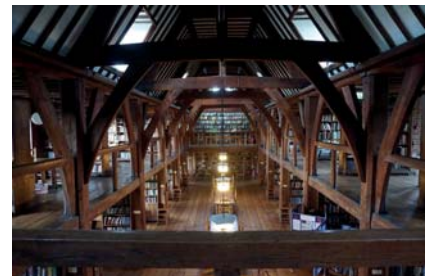
Following completion of the demolition of the former flats built behind the free Renaissance elevations of nos. 55-91 Knightsbridge designed by W D Caroe in 1905, excavation has started on site to form the basements of the new shop, office and apartment building designed by Dixon Jones. Paint research has revealed the ebony-coloured joinery of the single surviving shopfront, which will be used as a model for the whole terrace.



Bedaies School

Old and new at Bedales School

The addition of curtains and the embroidery of 'the wondrous bee' have provided the finishing touches to our restoration of Ernest Gimson's Lupton Hall, the original school hall of 1911. It has been very successfully reinvented as a specialist hall for music. Meanwhile, our plans for the rebuilding of the former art and design buildings as student studies and a sixth form common room and bar are taking shape on site. The new buildings will be ecologically sound, with a timber frame and oak cladding.



The Charterhouse



We have just heard that our proposed redecoration of the Tudor Great Chamber at the Charterhouse as a setting for its fine collection of 17th century portraits has been successful in gaining HLF funding. The walls will be decorated to match the grey-green plinth of the Tudor fireplace, with highlights of black and gold, and hung with a fine green silk moiré wall-hanging. The pictures will be hung from a bronze rail and lit by picture lights; additional spotlights will light the architectural features; and free-standing candelabra will be introduced for functions and events.

College of Arms

Repair of the external elevations

We were first involved in re-roofing the College of Arms twenty years ago, and have returned to repair the 17th century elevations. The bricks are dirty and there are many types and colours of pointing. Repair decisions are therefore based on both technical and aesthetic considerations. The removal of many thick layers of paint has revealed the quality of the original stone carving



Ragged School Museum

Giving the Ragged School Museum a sustainable future

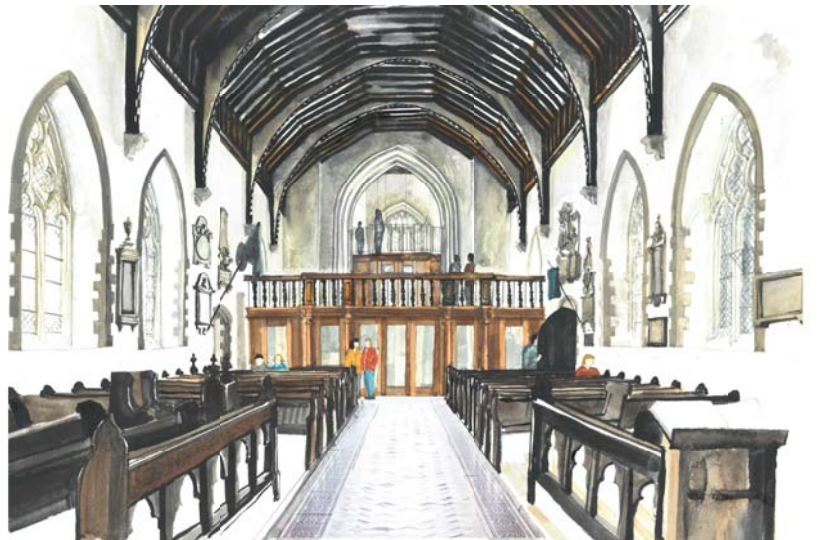
Richard Griffiths designed the first phase of the Ragged School Museum thirty years ago, and generations of schoolchildren have experienced the education of the poorest East End children in the recreated Victorian classroom. We have returned to convert the adjacent warehouse building as an extension of the museum on the upper ground floor, a canalside café/ bar on the lower ground floor, workspace on the first floor and a multi-use function space in the toplit studio on the second floor. The new facilities should make the museum economically and socially sustainable.



St Etheldreda

A new parish room for St Etheldreda, Hatfield

We have designed a new gallery at the west end of St Etheldreda, containing a parish room, kitchen and WC's at church level, a gallery for choir robing at the upper level, and a new balcony for bellringers above. The gallery front reuses the Tuscan oak columns from the existing, unfinished, organ gallery. The glazed doors can be opened to the church on major festivals to extend the seating capacity.



Old Buildings, New Architecture

The 25th anniversary of Richard Griffiths Architects is to be marked by the publication of a book about the work of the practice, to be launched next Summer. In the book, Richard Griffiths reflects on all aspects of working with historic buildings, repairing and equipping them for new uses and adding a new layer of architecture to all those that are already present. The creation of new architecture for old buildings is as interesting and rewarding as it is for new buildings, since old buildings have a richness of memory, significance and texture that new buildings can only acquire over time. The launch will be on 11th July at Southwark Cathedral.