

RICHARD GRIFFITHS ARCHITECTS

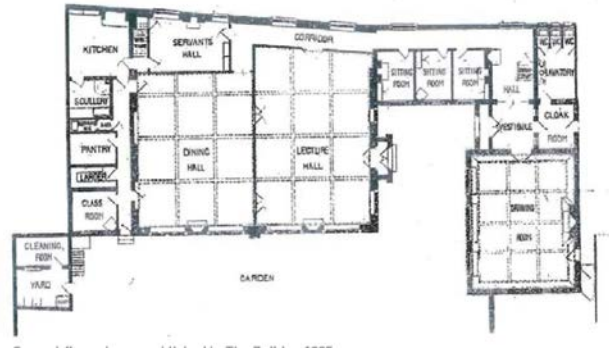
5 Maidstone Mews, 72-76 Borough High Street, London SE1 1GN
T +44 (0)20 7357 8788 | F +44 (0)20 7403 7887
E admin@rgarchitects.com | www.rgarchitects.com

Toynbee Hall Architectural Press Release

19 September 2018



Toynbee Hall 1885



Plan of Toynbee Hall 1885

Richard Griffiths Architects have just completed the major HLF-funded regeneration project for Toynbee Hall, the listed building off Commercial Street, that has been the centre from which its work of education and welfare for poor people of East London has been carried out since its foundation in the 1880's. The building was designed by Elijah Hoole as a gabled Tudor mansion in which volunteers from Oxford and Cambridge colleges lived while helping at the Settlement, containing two large halls, the Lecture Room and Ashbee Hall. These have been fully restored, served by a new Arts and Crafts - inspired Crush Hall on the site of the original Servants' Hall.



New front entrance



Ashbee Hall

The halls are reached from a new main entrance, visible from Commercial Street, via a new corridor that runs the full length of the original rear elevation, which has been exposed to view, including the scars of time. The brick wall facing the corridor provides a means of orientation wherever you are in the building, and dramatizes the contrast between the original building and the new extensions that wrap around the original building. The extensions provide additional break-out, meeting and ancillary facilities for conference use.

RICHARD GRIFFITHS ARCHITECTS

5 Maidstone Mews, 72-76 Borough High Street, London SE1 1GN
T +44 (0)20 7357 8788 | F +44 (0)20 7403 7887
E admin@rgarchitects.com | www.rgarchitects.com

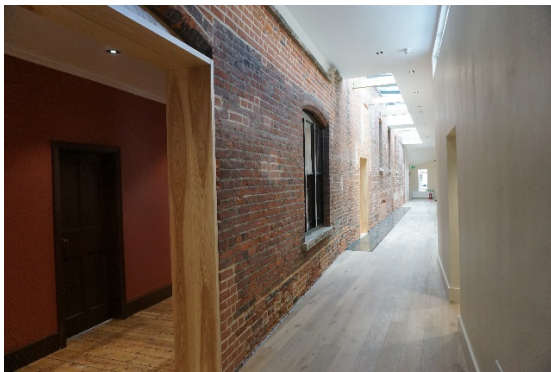


The new Crush Hall



Ebenezer Hoole's remarkable staircase

The remarkable fretted balustrade of the main staircase has been restored to its Aesthetic Movement splendour, leading to the first floor corridor with a glazed margin to the floor that allows views of the full height of the brick rear wall and gables. Four of the original bedrooms over the new entrance hall have been restored to their original decorative appearance, while the partitions of the bedrooms over the halls have been stripped out as far as possible to provide open-plan offices for the staff of Toynbee Hall. The retained fireplaces with their cast iron grates bear witness to the lost bedrooms. The central top-lit former common room in the middle of the first floor has been kept and restored, retaining the original match boarding as far as possible above door-head height.



First floor corridor outside the rear wall



First floor offices

Accommodation for residential visitors and volunteers has been provided in the new north extension at first floor level and in the second floor bedrooms in the gabled roof. In order to provide access between the two roof pitches a new corridor has been formed to join them, enjoying remarkable views into the first floor central meeting room on one side and over the roofs to East London on the other.

Design Team

Architect
Structural Engineer
Services Engineer

Richard Griffiths Architects richard@rgarchitects.com
Alan Baxter and Associates
SGA Consulting