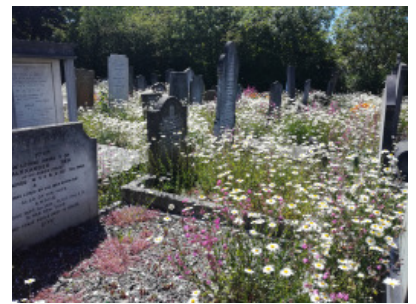
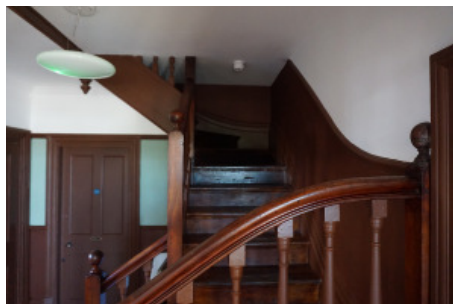


RICHARD GRIFFITHS ARCHITECTS

Project profile Willesden Jewish Cemetery



Opening the foremost Jewish Cemetery to the public

Willesden Jewish Cemetery is the oldest and most important cemetery for Orthodox Jews in this country, with the tombs of Rosalind Franklin, the chemist central to the understanding of DNA, the painter Mark Gertler, the Rothschild family and many others. A

project assisted by the NLHF has opened the cemetery to all, interpreted its history, refreshed it planting and converted the lodge into a visitor centre with a welcoming new loggia of oak and glass walls and a brick floor.

Client: The United Synagogue